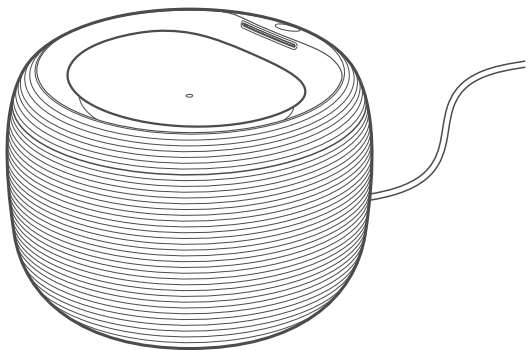


MARTIN SMART FOUNTAIN **USER MANUAL**

86816






NOTICE



**Please Read The User Manual Carefully
Before Use and Keep It in A Safe Place!**

Contents



| | |
|--|------------|
|  Important Safety Information | 1 2 3 |
|  What's in The Box | 4 |
|  Learn About Your Fountain | 5 6 7 |
|  How The Fountain Works | 8 |
|  How to Use | 9 10 11 12 |
|  How to Clean | 13 14 15 |
|  Precautions | 16 |
|  FAQ | 17 |
|  Terms of Use & Limitation of Liability | 18 |
|  Certification Statements | 19 20 21 |
|  Specifications | 21 |

Important Safety Information

1



Explanation of Attention Words and Symbols



This is the safety alert symbol. It is used to alert you to potential personal injury hazards. Obey all safety messages that follow this symbol to avoid possible injury or death.

WARNING

WARNING indicates a hazardous situation which, if not avoided, could result in death or serious injury.

CAUTION

CAUTION, used with the safety alert symbol, indicates a hazardous situation which, if not avoided, could result in minor or moderate injury.

CAUTION

CAUTION, without the safety alert symbol, is used to address practices not related to personal injury.

NOTICE

NOTICE is used to address practices not related to personal injury.



PROHIBITED indicates that the operation is prohibited.



EXCLAMATION MARK some information that requires additional attention.

Important Safety Information

2



Safety Instruction for This Product

⚠️ WARNING

This equipment is not recommended for pets under 3 months old.



⚠️ CAUTION

Please use the original USB power cable, otherwise it will damage the device or cause safety hazards.

This product is a low-voltage product, but pets biting on the cable will still cause electrical leakage. Please guide your pets properly.

If the water in the product is not consumed for a long time, the water must be changed in time. Please make sure the pet's drinking water is clean, non-toxic and harmless.



CAUTION

Keep it level and do not knock over the product, otherwise it will cause the equipment to malfunction or spill water.



Important Safety Information

3



Safety Instruction for This Product

CAUTION

This product can only filter drinking water, please do not place other pet beverage products or other non-pure water liquids in the fountain.

Please use this product in an indoor environment.

When the product contains water, the indoor ambient temperature cannot be lower than 0°C (33.8°F). Otherwise, freezing will damage the product.



NOTICE

This product is forbidden to be washed in a dishwasher.

When not using the product for a long time, please unplug the power supply, empty the water in the bucket, and store it properly.

In order to provide better products, we regularly carry out product improvements. The actual product may be different from the package picture. Please refer to the actual product.

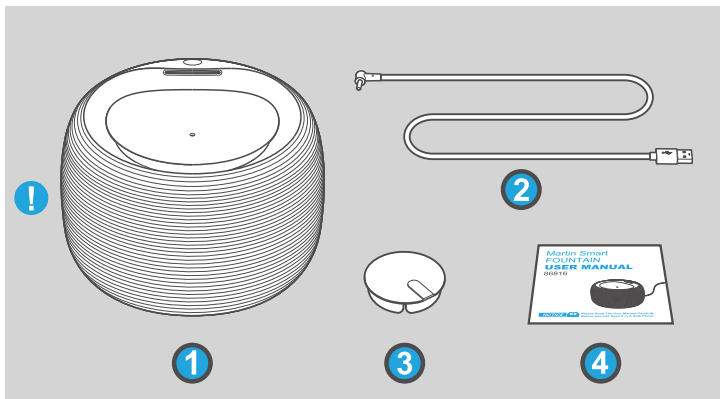


What's in the Box

4



Components



1. Martin Smart Fountain for pet 1
2. Power Cable 1.5 m 1
3. Filter 1
4. Quick start card + User Manuel online 1



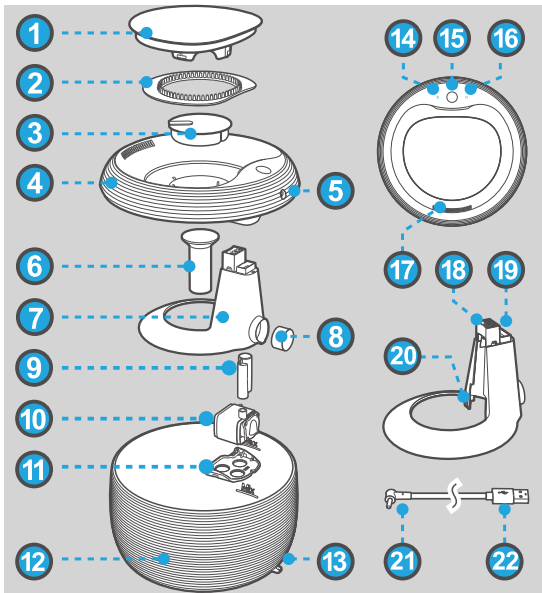
All the main plastic parts of this product are food-grade plastic and BPA-free materials.

Learn about Your Fountain

5



Introduction of Components



1. Water Tray
2. Hair Blocker
3. Filter
4. Top Cover
5. DS Socket
6. Muffler Bracket
7. Cover Bracket
8. Filter Sponge
9. Aqueduct
10. Water Pump
11. Pump Cover
12. Bucket
13. Cable Buckle
14. Smart Mode Indicator
15. Touch Button
16. Normal Mode Indicator
17. Water Drain
18. Pump Terminal
19. Aqueduct Connection
20. Cable Buckle
21. DC Head
22. USB Terminal

Learn about Your Fountain

6



Features



User-Friendly
Interface



Dual Working
Modes



Plug & Play
Power Switch



2.5 L Super
Long Endurance



Touch Button



Waterscape
Attraction



Multi-Purification
System



Full Contact
Purification



Immersion
Cleaning



Full Cleaning



Automatic
Hair Flushing



Water Shortage
Alarm



Food Grade
Body Material



Easily
Transportable



Silent Fountain



Anti-Overflow
Prevention

Learn about Your Fountain

7



Introduction of Main Features

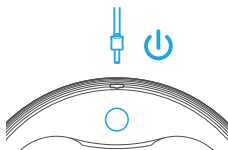
Plug~Play & One Touch Button

Power Switch :

The power connector is the power switch, this product is plug and play.

Mode Switch :

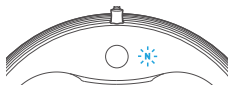
Double-Touch to switch the working mode; Long-Touch to manually flush hair.



Two Working Modes

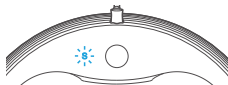
Normal Mode (N) :

This is a continuous working mode, with uninterrupted water output. It is the default mode and automatic flush hair every half an hour.



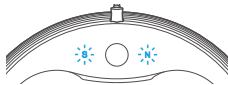
Smart mode (S):

This is a power-saving mode, with a 1 minute pause every 6 minutes, and automatic flush hair after 5 cycles.



Water Shortage Alarm

When the bucket is at a low water level or no water, the N and S indicator lights will flash at the same time to indicate water shortage.



How The Fountain Works

8



The Basic Principles of Purification

Three Filter Media



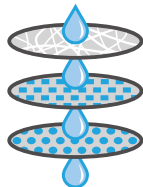
The Microporous non-woven fabric:
Filters large particle impurities.



Coconut shell activated carbon:
Removes residual chlorine and foreign matter.



Cation Exchange Resins:
Removes heavy metal ions in water and softens the water quality.



Filter life cycle



Replace in 2 weeks in N mode.
Replace in 4 weeks in S mode.

The service life of the filter element will be different according to the specific usage and the quality of the water source.



N MODE

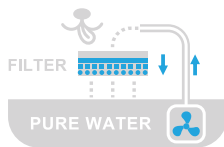


S MODE

Principle of living water cycle



The ultra-quiet water pump realizes the function of water circulation. Flowing water not only helps keep the water clean, but also attracts pets' attention and encourages pets to drink water in time.





Unpacking and Assembly

NOTICE



After unpacking, please first confirm the accessories match the item list. After confirmation, please read the manual and the quick start card carefully.

1. Take out the filter, muffler sponge, and pump filter sponge, and rinse them.

Notice: The filter element needs to be rinsed before use to wash off the activated carbon powder.

2. Lift the water tray with fingers along the edge of the water tray, first put in the muffler sponge, and then place the filter face up in the filter compartment.

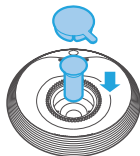
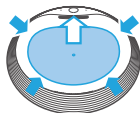
3. Unpack the power cable, insert the DC head into the DC Socket of the product, and fix the cable to the cable buckle at the lower end of the basin.

4. Align the DC head and the cable buckle in the vertical direction. The product is assembled.

1

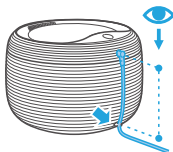


2



3

4





First Use & Water Collecting

First Use

Please clean the product thoroughly when using it for the first time. See page 13~15 for the cleaning method.

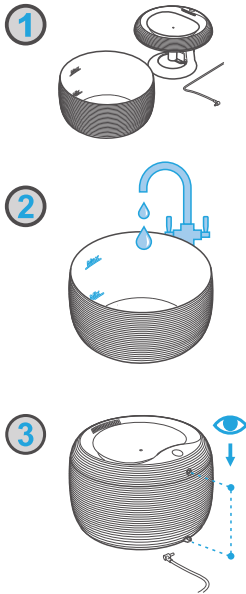
Water Collecting

You can take the entire fountain to the water source to collect water, or only the bucket to collect water.

1. Unplug the DC head, remove the top cover and place it on a clean surface.
2. Fill the bucket to the maximum water level with water.
3. Put the top cover on the bucket, and align the DC head with the cable buckle at the bottom of the bucket. (If necessary, wipe the bottom of the top cover bracket).

CAUTION

Do not use hot water above 46°C (114.8 F).
Only for household tap water or bottled drinking water.

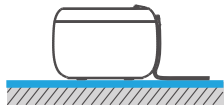




Operations

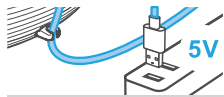
Placement of Fountain

Choose an ideal location in the room to place the fountain. The placement surface should be level and away from other household appliances.



Power Connection

Insert the USB terminal into any USB port and fix the power cable to the bottom of the bucket.



INPUT VOLTAGE

CAUTION The input USB voltage of this product is 5V. It is forbidden to use **multi-port** mobile phone fast charging adapter, which may cause damage to the circuit board. Please check the output voltage of your power supply and adapter type carefully.



CAUTION

**Multi-Port
Fast Adapter
Is Prohibited**

Boot Up & Self-Check

The DC head is the power switch. When the DC head is inserted into the DC Socket, the product will start with a beep. Immediately afterward, the product will conduct a self-check. After the selfcheck is complete, the fountain will begin in normal mode by default.

Unplug the DC head to shut down and the product stops working.

N → S → N+S

SELF-CHECKING

N

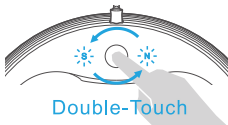
WORKING



Operations

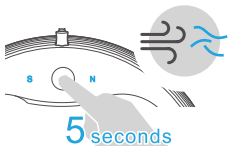
Switch Mode

Double-touch the touch button to switch between the normal mode (**N**) and the smart mode (**S**). The double-touch interval is less than 1 second and accompanied by a sound prompt.



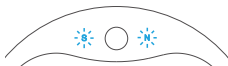
Manual Hair Flushing

Press and hold the touch button for 5 seconds to start the hair flushing function. The hair flushing function lasts for 15 seconds. If it is not cleaned once, please repeat the operation until the hair is cleaned from the water tray.



Water Shortage Alarm

When the water level drops to a low level, the N/S indicator will flash simultaneously. Please check the water level regularly so that you can refill the water for pets in advance.



Automatic Hair Flushing

In the **N** mode, it will automatically flush once every half hour; in the **S** mode, it will automatically flush once after every 5 times of output water.





Cleaning and Maintenance

Simple Cleaning

It is recommended to clean the bucket, filter element, and muffler sponge every time you re-fill water. Simple cleaning does not require disassembly of the product, and can be cleaned by hand with dish soap and water.

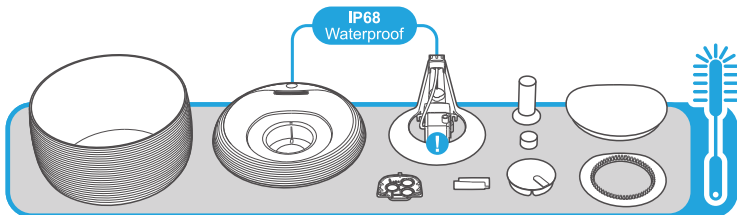


Full Cleaning

Perform a full cleaning every month. After the fountain is used for a long time, some particles may be built up on the surface of the internal waterway, which needs to be cleaned with a brush. Full cleaning requires disassembly of the product.



The water pump cannot be removed from the cover bracket





Disassemble Parts for Full Cleaning

Disassemble The Bracket from The Cover



Grab the bracket



Push cover away with thumb

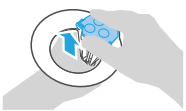


Remove the bracket

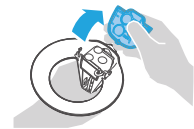
Disassemble The Pump Cover from The Bracket



Note the connection point



Lift the cover with thumb



Remove the cover

Disassemble The Pump From The Aqueduct



Note the aqueduct connection point



Hold the aqueduct and pull the pump away



Remove the pump from the aqueduct



Cleaning and Maintenance

Full Cleaning Details

Clean the filter element. It is recommended to rinse the filter element every time you re-fill water, which can effectively extend the service life of the filter element.

Muffler sponge and pump filter sponge can be cleaned with detergent and rubbed.

The top cover of this product has an **IP68** waterproof rating, and all components can be immersed for cleaning.

After each cleaning, wipe all parts with a rag or wait for all parts to dry before proceeding with assembly.

Due to the manufacturing process, the parts in contact with water have many modeling details, these details are more likely to accumulate dirt, so don't ignore these small corners when cleaning them thoroughly.

Do not use with a dishwasher or high temperature water for cleaning.





More Things You Should Know

Precautions

1. Outdoor use is prohibited, please use this product in an indoor environment.
2. It is forbidden to use in an environment where the temperature is lower than 0°C (32° F).
3. Please choose a suitable location to place the water fountain, avoid placing near household appliances or fire sources.
4. Please keep it level and do not knock over the equipment, otherwise it will cause the equipment to malfunction or spill water.
5. Disconnect the power supply during cleaning.
6. Do not allow pets to chew on the cable, as it may cause the equipment to leak electricity and there is a danger of electric shock.
7. If children use this equipment, please make sure to use the equipment under the guidance of adults.
8. When not using this product for a long time, please empty the water in the bucket and store it properly.
9. In order to provide better products, we will regularly carry out product improvements. The actual product may be different from the packaging picture. Please refer to the actual product.



FAQ

Q Why doesn't the product work after connecting the wires?

A The DC head is not inserted all the way, please insert it again. The power cable is broken inside, please replace with a new one. Please check if the socket switch is turned on.

Q How long can the filter element be used?

A The service life of the filter element may be longer or shorter depending on the specific usage. It is recommended to replace it after one month of continuous use.

Q Is the product quality safe?

A All our products use food-grade ABS plastic, which is safe and non-toxic. The other parts are all BPA-free. The electronic parts are completely separated from electricity and water.

Q Why is there black powder floating in the water?

A This is a fine powder of coconut shell activated carbon, which is safe and harmless. You can clean the filter element separately to solve this problem.

Q Why does the pump make abnormal noise during use?

A It is possible that small foreign objects have entered the water pump. Please disassemble and wash the water pump and reinstall the blades.

Terms of Use & Limitation of Liability

18



Terms of Use & Limitation of Liability

Terms & Limitation

1. **Terms of Use**

Your use of this product means that you accept all terms, conditions and statements in this manual.

2. **Correct Use**

This product is designed for pets' daily drinking water. Proper use includes reviewing the entire user manual included with the product and any specific "Caution" statements.

3. **Prohibition of illegal or Prohibited Use**

This product is only suitable for pets. Please ensure that the water source is clean, non-toxic and harmless. Using this product not in accordance with the instruction manual may violate local laws.

4. **Scope of Responsibility**

The manufacturer is not responsible for any related damages, direct, indirect, punitive, non-major, and other indirect losses caused by incorrect use or abuse of this product. The buyer bears all risks and responsibilities of using this product.

5. **Modification of Terms and Conditions**

The manufacturer reserves the right to change the terms, conditions and notices related to this product.



This device complies with Part 15 of the FCC Rules. Operation is subject to the following two conditions:

- (1) This device may not cause harmful interference, and
- (2) This device must accept any interference received, including interference that may cause undesired operation.

Warning: Changes or modifications not expressly approved by the party responsible for compliance could void the user's authority to operate the equipment.

Note: This equipment has been tested and found to comply with the limits for a Class B digital device, pursuant to Part 15 of the FCC Rules. These limits are designed to provide reasonable protection against harmful interference in a residential installation. This equipment generates uses and can radiate radio frequency energy and, if not installed and used in accordance with the instructions, may cause harmful interference to radio communications.

However, there is no guarantee that interference will not occur in a particular installation. If this equipment does cause harmful interference to radio or television reception, which can be determined by turning the equipment off and on, the user is encouraged to try to correct the interference by one or more of the following measures:

- Reorient or relocate the receiving antenna.
- Increase the separation between the equipment and receiver.



- Connect the equipment into an outlet on a circuit different from that to which the receiver is connected.
- Consult the dealer or an experienced radio/TV technician for help.



The company declares under its own responsibility that this product complies with the basic requirements of CE (2014/30/EU) and RoHS (2011/65/EU).

Without the approval of our company or the distributor, unauthorized changes or modifications to the equipment may violate the CE regulations, may cause the user to lose the right to operate the equipment, and invalidate the warranty.



Recycling Information

Please observe the regulations for electronic and electrical devices to be disposed of in the respective country. In some countries or regions, this device must be recycled. If this device is no longer required, it must not be disposed of with normal municipal waste. For more recycling information, please refer to local regulations.

Certification Statements & Specifications

21



Material execution standards

The main materials of the product (including 1, 2, 4, 7, 9, 11, 12, see page 5) have passed the test based on the terms of "FAD 21 CFR 180.22 & 181.32-Acrylonitrile monomer" and meet the food contact level standards. The main materials of other parts are all BPA-free materials.



Specifications

Product name: Martin Smart Fountain
Content: 1 water fountain, 1 cable, 1 filter, 1 quick start card
Model reference : 86816
Input voltage: 5V-18VDC
Rated power: 0.5W
Working current: 200mA
Body material: Food Grade ABS
Product capacity: 2.5L (0.66 gal)
Net weight: 0.85kg (1.87lb)
Product size: 21cm*21cm*15cm(8.3in*8.3in*6in)
Operating temperature: 1°C~40°C (33.8°F~104°F)
Storage temperature: -10°C~50°C (14°F~122°F)/No water
Scope of application: domestic cats and medium/small dogs



 martin®