

# Mini JetCare<sup>®</sup> System

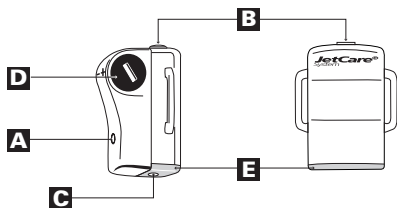


Fig 1

Fig 2



Fig 3

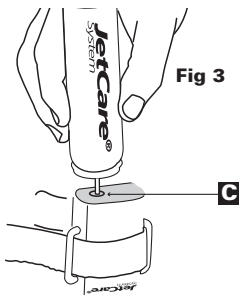


Fig 4

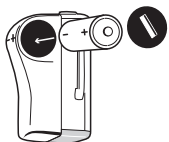
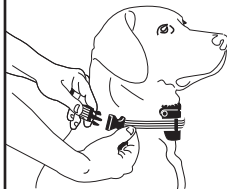


Fig 5



040247/03

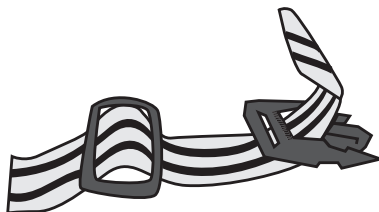
**DYNAVET**

**Mise en place du fermoir sur la sangle**  
*Fixing the clasp on the strap*

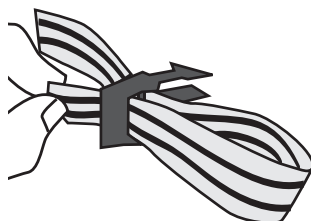
1



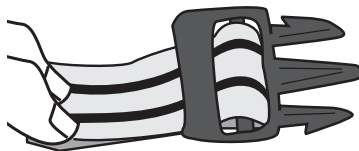
2



3



4



5



## INSTRUCTIONS FOR USE

GB

You have just purchased the JetCare® System anti-bark collar, which is suitable for all types of dogs, large or small. Advanced scientific research on animal behaviour was used in its development. It is totally painless and harmless to your dog, and works by surprising or distracting him from barking. As soon as your dog starts barking, he receives a spray directed under his nose. This stimulus acts on the animal's various senses: hearing (the hiss noise), sight (spray cloud), touch (cold wet contact). Very soon, your dog learns that he must not bark when wearing the collar.

### Description of the pack

- an Jetcare® system unit
- a 6 V Lithium battery
- a strap
- a loop for the strap (underneath the strap)
- an aerosol refill
- instructions for use
- a guarantee card
- a token to open the battery door

### Description of the unit (see figure 1)

- A - Microphone (to be positioned against the dog's neck)
- B - Spray nozzle (to be placed upwards)
- C - Filling valve
- D - Battery cover
- E - White background to help check the fill level

### 1 - Preparing the collar

#### a) Fitting the strap (see figure 2)

- Secure the strap around the Jetcare® system by sliding it through the two lugs.
- CAUTION, the microphone must not be hidden.
- Place the loop on the strap
- Slot the end of the strap in the black buckle to form a collar.
- Adjust the collar around your dog's neck. It should be possible to run your finger between the dog's neck and the strap.
- Push the rest of the strap through the loop.
- If you wish, cut the extra length of strap with scissors and burn the cut edge to prevent it from fraying. Caution: do not do this while the dog is wearing the collar as its hair might catch fire.

#### b) Filling the reservoir (see figure 3)

- Place the unit upside down on a flat, solid surface. The white part (with the filling valve) must be uppermost facing you.
- Direct the refill so that the tip is pointing downwards.

- Insert the tip in the filling valve (same operation as for filling a lighter)
- Press canister firmly downwards for 10 seconds.
- Release pressure.
- Do this again for 10 seconds. This operation must be repeated until the tank is full.
- Check the level in the tank by tipping the unit. The liquid level can be seen against the light.
- Caution: never fill the device while the dog is wearing it as this could damage the filling valve.

#### c) Inserting the battery (see figure 4)

- With a coin, unscrew the battery cover. Slide the battery into the slot, "-" (negative end first). The "+" (positive end) should then be against the battery cover (facing outwards).
- Screw the cover back on (you can use the coin), applying slight pressure on the battery.

#### d) Testing your collar

Once you have followed all the steps, you can check that the Jetcare® system is working properly. Blow on the microphone, taking care to direct the nozzle away from your eyes. The emission of a spray indicates that your Jetcare® system is in working order. The release of spray indicates that it is working correctly.

#### e) Fitting the collar on your dog (see figure 5)

- Secure the strap around the dog's neck. The microphone must be against its neck

and the nozzle directed upwards towards the nose.

- Tighten the collar gently, leaving space for two fingers between your dog's neck and the Jetcare® system : the spray must be directed towards his muzzle.

- For dogs with long hair, the collar should be lengthened so that the spray nozzle is clear of the coat ! Alternatively the hair could be trimmed.

### 2 - Initial tests

Your dog must associate barking with the release of the spray. Therefore, the collar must always be in working order, with a working battery and the tank full.

It may take a few days for your dog to quieten down. During the first few days of use, he may completely empty the device with his barking. It is important never to let the device run dry while it is on your dog, otherwise he will learn that he can empty it by barking! We strongly advise to keep an eye on your dog during the first few days of use, so that you will be able to refill the reservoir as soon as necessary. Try the device at the weekend, for example, so that you have time to observe your dog and join in the training.

### 3 - To get the best results

We advise you to be present for the initial tests. When the dog barks, the spray is triggered and stops the barking through a surprise effect.

As soon as your dog has calmed down, praise and start play with him. This way, your dog will understand that there are

other ways to work off tension, and wearing the Jetcare® system is not unpleasant.

### 4 - Normal use

Your dog must not wear his Jetcare® system constantly, rather use it only when you want to stop him from barking. As soon as you remove the Jetcare® system, your dog will revert to normal behaviour.

### 5 - Troubleshooting

- First check that the device is in working order (battery working and tank filled, see. 1 Preparing the collar).

- If the collar still does not work, the battery may be flat. In this case, you can purchase an identical one from your supplier or large electrical stores.

- If the device still does not work, you can contact our after-sales service (address on guarantee card).

### *If the dog continues barking:*

- The Jetcare® system unit may be faulty. Please contact our after sales service.

- It may be a more serious behavioural problem, about which you should contact your veterinary surgeon or an animal behaviourist.

### **VERY IMPORTANT**

- If your dog usually wears a chain collar or a metallic address tags, you will have to take them off while using the Jetcare® system.

- The unit is splash proof, but must not be

immersed in water.

- Never refill the Jetcare® system when it is on your dog's neck. You could damage the filling valve and frighten the dog.

- Remove the battery when not in use.

- Do not leave the device or the refill at a temperature above 45°C.

- Do not attempt to take the unit apart as you will likely damage the mechanism and invalidate the guarantee.

- The use of a mobile telephone less than 1 metre away from an JetCare® System may sometimes trigger release of spray due to electromagnetic interference.

- Only use refills and batteries identical to those supplied in the original pack, available from your supplier.

- Do not fill the tank through the microphone.

- Keep the refill canister and unit out of reach of children.



Hereby, DYNA VET, declares that the Mini Jetcare System Anti aboiement device is in compliance with the essential requirements and other relevant provisions of Directive 1999/5/EC

The statement of compliance is available in the appendix reference: 040297



### **Note relating to recycling:**

This collar must not be disposed of with other waste : it is subject to selective collection with a view to its reclamation or recycling.